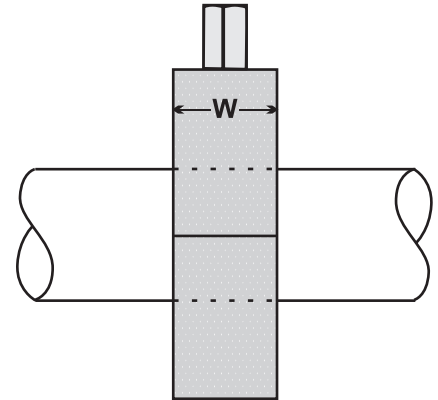
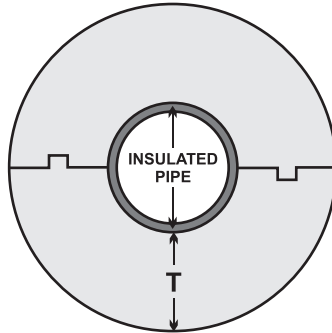
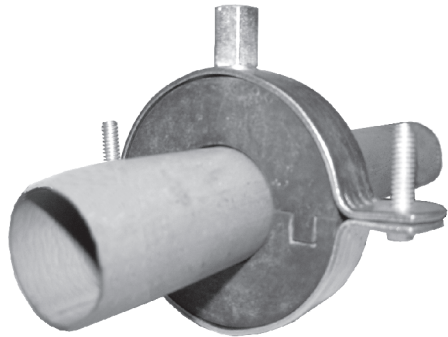




RUBBER SUPPORT INSERTS (FOR INSULATED PIPES)



- * TO TRANSMIT PIPE LOAD TO SUPPORTS OR HANGERS WITHOUT CRUSHING INSULATION
- * MACHINE MOULDED THUS ACCURATE DIMENSION
- * WITH TONGUE AND GROOVE JOINTS TO PREVENT INGRESS OF AIR
- * MINIMISE TRANSMISSION OF NOISE AND VIBRATION
- * PREVENT CONDENSATION ON HANGERS AND SUPPORTS
- * PROOF AGAINST ROTTING AND TERMITE ATTACK
- *NO CRACKING / DISTORTION
- * ECO FRIENDLY * MATERIAL - HARD RUBBER * OPERATING TEMP - -20 TO 110 C

ITEM CODE	PIPE SIZE	WIDTH W	INSULATION THICKNESS T		
			13 mm	25 mm	38 mm
RSI 12	1/2"	25 mm	X	X	X
RSI 34	3/4"	25 mm	X	X	X
RSI 100	1"	25 mm	X	X	X
RSI 114	1 1/4"	25 mm	X	X	X
RSI 112	1 1/2"	25 mm	X	X	X
RSI 200	2"	25 mm	X	X	X
RSI 212	2 1/2"	38 mm	X	X	X
RSI 300	3"	38 mm	X	X	X
RSI 400	4"	38 mm	X	X	X
RSI 500	5"	38 mm	X	X	X
RSI 600	6"	50 mm	X	X	X
RSI 800	8"	50 mm	X	X	X
RSI 1000	10"	50 mm	X	X	X
RSI 1200	12"	50 mm	X	X	X
RSI 1400	14"	50 mm	X	X	X
RSI 1600	16"	50 mm	X	X	X
RSI 1800	18"	50 mm	X	X	X
RSI 2000	20"	50 mm	X	X	X

NOTE : * RESEARCH & DEVELOPMENT IS A CONTINUOUS PROCESS WITH US. AS IMPROVEMENTS ARE MADE FROM TIME TO TIME, SPECIFICATIONS / DIMENSIONS MAY CHANGE WITHOUT NOTICE.
* TOLERANCES IN DIMENSIONS ARE AS PER INTERNATIONAL STANDARDS.



RICHFIELD[®]
GROUP OF COMPANIES

205 / 206, Morya House, Veera Industrial Estate,
Off New Link Road, Andheri (W), Mumbai 400 053. INDIA.
Tel. : 91-22-2673 3171 /2673 2947 Fax : + 91-22-2673 3147
E-mail : abasrani@rediffmail.com